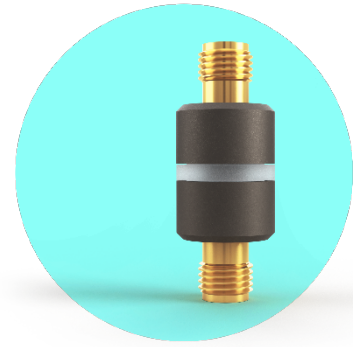


## Key Features – Inner/Outer DC-Block

- Main application: Controlled grounding of electronic measurement setups
- Inner- and outer-conductor DC-block
- 10 MHz to 9.5 GHz frequency range for RF
- Low insertion- and high return loss
- Compact dimensions



*DC-Block Aluminum casing with isolation ring*

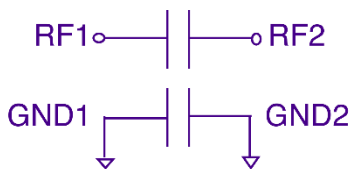
## Absolute Maximum Ratings

DC input voltage	+/-100 V
RF input power	+32 dBm
Operating temperature	-55 to 85 °C

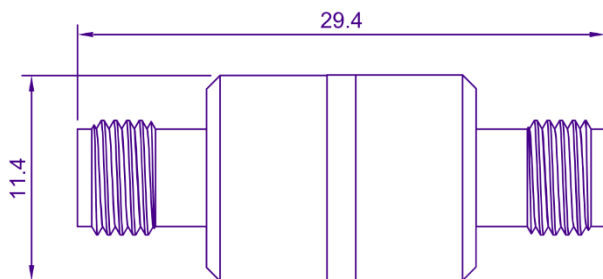
## Typical Performance

RF frequency	10 MHz – 9.5 GHz
Insertion loss	< 0.8 dB
Return loss	> 17.5 dB

## Circuit Schematic



## Drawing Casing [mm]



## Scattering-Parameters

